



INSTALLATION INSTRUCTIONS

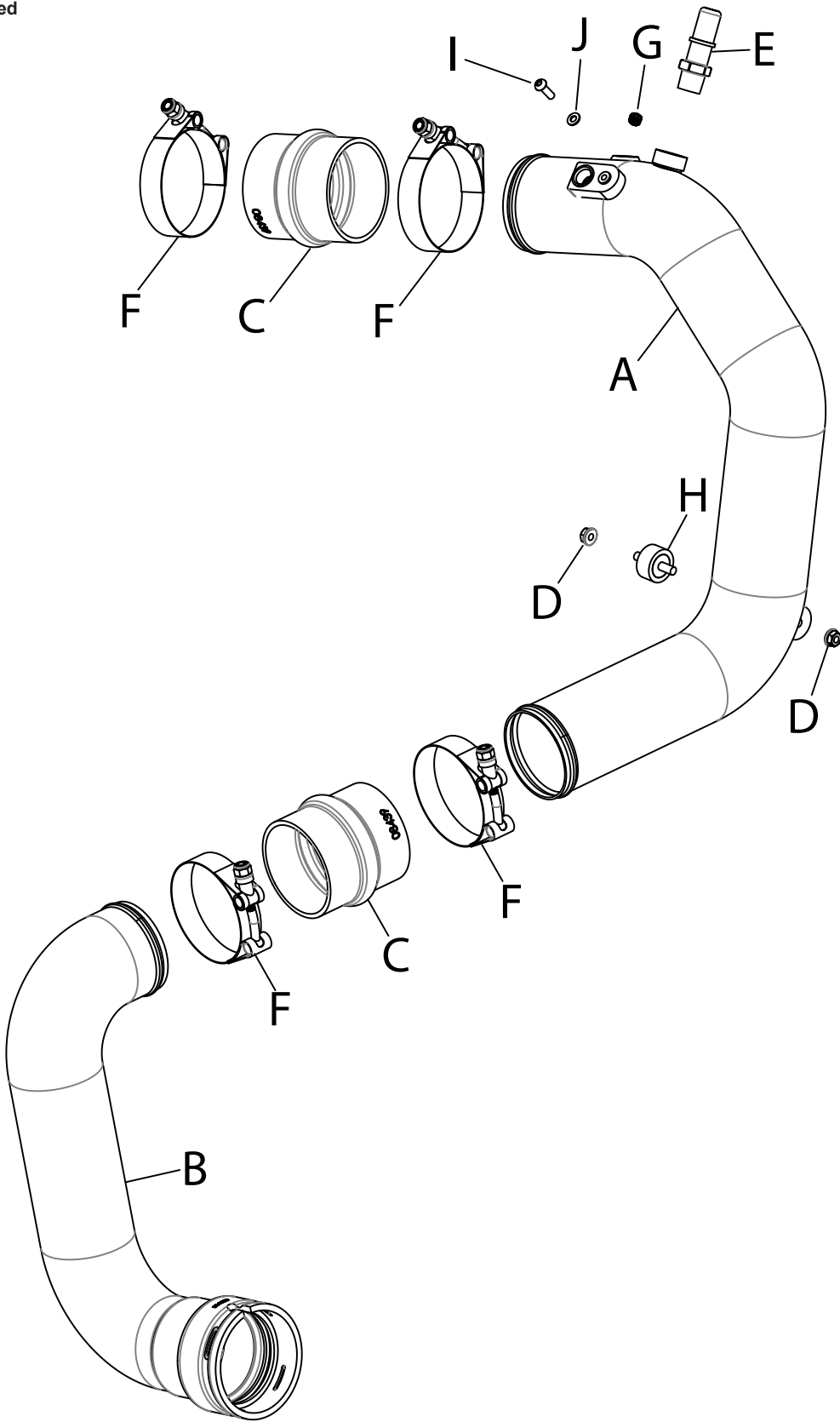
Not legal for sale or use in California on any pollution controlled motor vehicle.

77-1020KC FORD 2023-25 BRONCO RAPTOR 2024-25 RANGER RAPTOR V6-3.0L TURBO

NOTE: This kit was not designed to fit vehicles with a body lift.

TOOLS NEEDED:

- Ratchet
- Extension
- 7mm Socket
- 8mm Socket
- 10mm Socket
- 11mm Socket
- 3mm Allen Key
- Adjustable Wrench
- Pick



PARTS LIST:

Description	Qty.	Part #	Description	Qty.	Part #	Description	Qty.	Part #
A UPPER CHARGEPIPE	1	25927C	E FITTING; QUICK CONNECT	1	82637-1	H STUD; M6-1.00 M/M RUBBER	1	07027
B LOWER CHARGEPIPE	1	25928C	F HOSE CLAMP; T-BOLT, #312	4	21852	I BOLT; M5 X .8 X 20MM	1	22208
C HOSE; HUMP 2.75"ID X 3"L	2	08439	G PLUG; 1/8" NPT	1	1-1014	J WASHER; 5MM FLAT	1	08212
D NUT; M6, HEX, SERRATED	2	444.460.04						

If you need any assistance please call 1-800-858-3333 to speak with a representative in our Customer Service Center before returning the product.

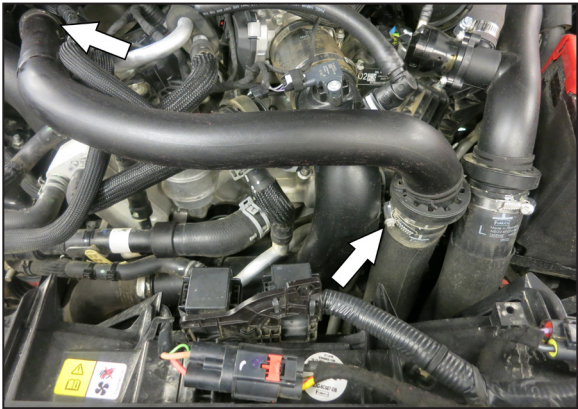
NOTE: FAILURE TO FOLLOW INSTALLATION INSTRUCTIONS AND NOT USING THE PROVIDED HARDWARE MAY DAMAGE THE INTAKE TUBE, THROTTLE BODY AND ENGINE.

Continued

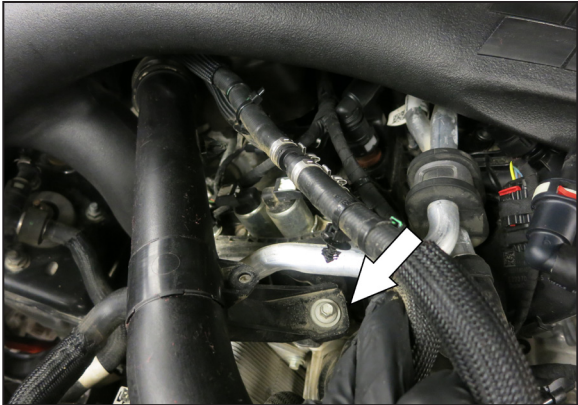
INSTALLATION INSTRUCTIONS

TO START:

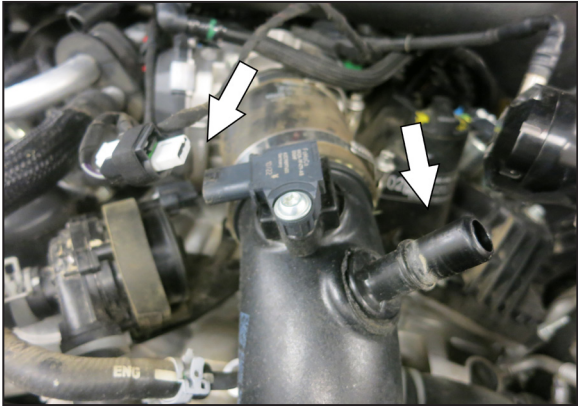
1. Turn off the ignition and disconnect the negative battery cable.
NOTE: Disconnecting the negative battery cable erases pre-programmed electronic memories. Write down all memory settings before disconnecting the negative battery cable. Some radios will require an anti-theft code to be entered after the battery is reconnected. The anti-theft code is typically supplied with your owner's manual. In the event your vehicles anti-theft code cannot be recovered, contact an authorized dealership to obtain your vehicles anti-theft code.



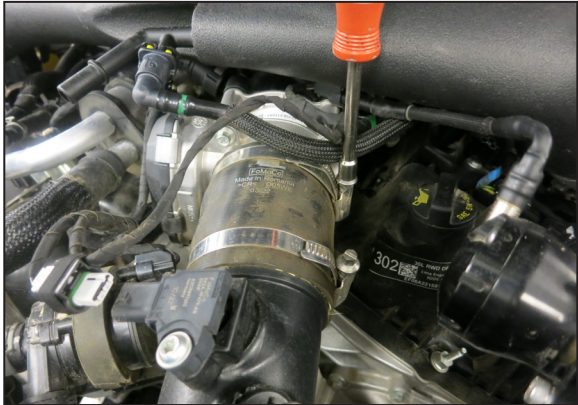
2. Loosen the hose clamps that secure the hot side upper charge tube to the turbo and hot side lower charge tube.



3. Reposition the coolant hose to gain access to the hot side charge tube mounting bolt and then remove the mounting bolt. Remove the hot side upper charge tube from the vehicle.



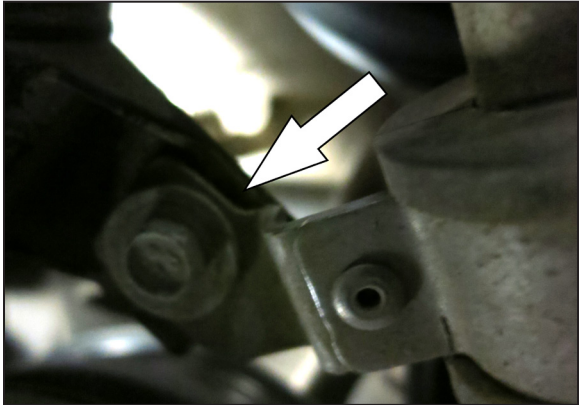
4. Disconnect the cold side charge tube pressure sensor electrical connection and then disconnect the CCV hose quick connect fitting.



5. Loosen the hose clamp that secures the cold side charge tube to the throttle body and then loosen the clamp at the upper to lower charge tube connection.



6. Remove the bolt that secures the lower part of cold side charge tube to the mounting bracket.



7. Remove the bolt that secures the upper part of cold side charge tube to the mounting bracket.



8. Remove the upper cold side charge tube from the vehicle.



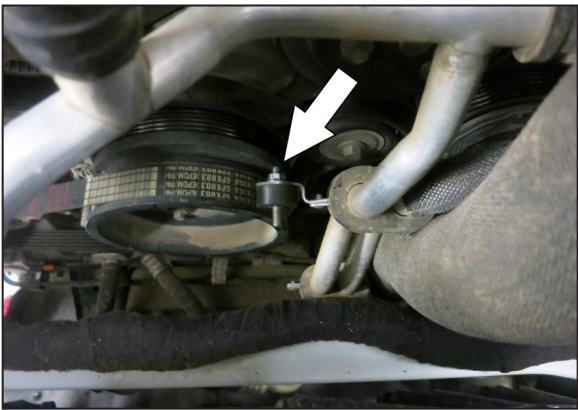
9. Pull the locking clip that secures the lower cold side charge tube to the intercooler. **NOTE: Photo 1 shows charge tube connected to the intercooler, photo 2 shows the charge tube disconnected and the retaining clip in the unlocked position for reference. The charge tube is to be removed from under the vehicle.**



10. Remove the seal and retaining clip from the factory charge tube quick connect coupler to be used in the K&N quick connect coupler. **NOTE: Pay close attention to the direction the seal is installed into the fitting.**



11. Install the seal and retaining clip into the K&N quick connect coupler. **NOTE: Be sure to install the seal in the same direction as it was installed into the factory fitting.**



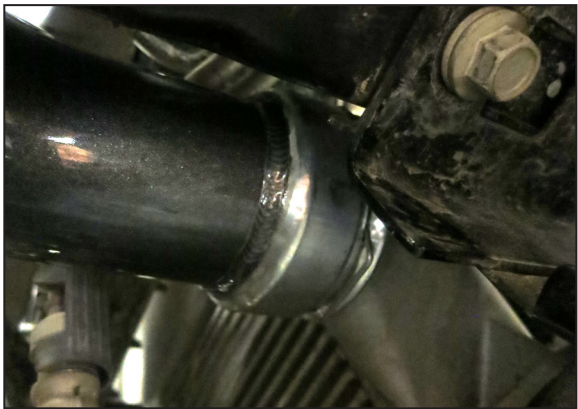
12. Install the provided rubber mounted stud into the charge tube mounting bracket.



13. Install the provided CCV quick connect fitting and 1/8npt plug into the K&N charge tube. **NOTE: be sure to use pipe sealant on the threads of the fitting and plug.**



14. Remove the pressure sensor from the factory charge tube and install the sensor into the K&N charge tube using the provided bolt.



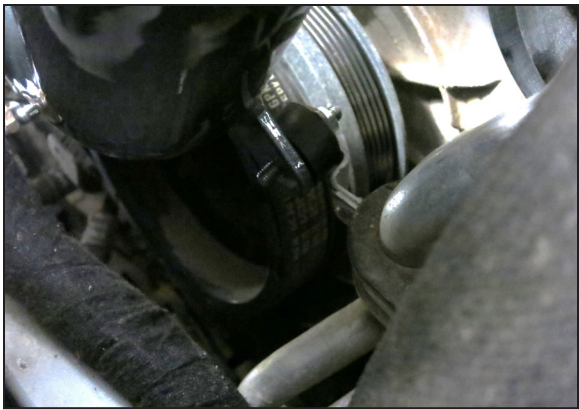
15. Install the K&N lower charge tube into position from under the vehicle and connect to the inter cooler. Push the quick connect fitting onto the inter cooler until a “click” is heard as the retaining clip locks into position. Pull back on the tube to be sure it is locked into position.



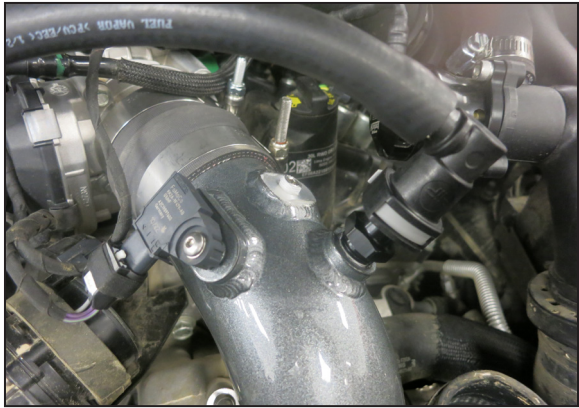
16. Install the provided hump coupler onto the lower charge tube and secure with the provided clamps.



17. Install the remaining hump coupler onto the throttle body and secure with the provided clamps.



18. Install the upper charge tube into the couplers, align the mounting bracket with the rubber mounted stud. Secure the tube to the mounting stud with the provided hardware and to the couplers with the provided hose clamps.



19. Reconnect the pressure sensor electrical connection and connect the CCV hose to the fitting installed into the K&N charge tube.



20. Install the provided decal onto the upper charge tube.



21. Reinstall the hot side upper charge tube and secure with the factory clamps.



22. Reconnect the vehicle's negative battery cable. Double check to make sure everything is tight and properly positioned before starting the vehicle.

23. It will be necessary for all K&N® high flow intake systems to be checked periodically for realignment, clearance and tightening of all connections. Failure to follow the above instructions or proper maintenance may void warranty.

ROAD TESTING:

1. Start the engine with the transmission in neutral or park, and the parking brake engaged. Listen for air leaks or odd noises. For air leaks secure hoses and connections. For odd noises, find cause and repair before proceeding. This kit will function identically to the factory system except for being louder and much more responsive.
2. Test drive the vehicle. Listen for odd noises or rattles and fix as necessary.
3. If road test is fine, you can now enjoy the added power and performance from your kit.
4. K&N Engineering, Inc., requires cleaning the intake system's air filter element every 100,000 miles. When used in dusty or off-road environments, our filters will require cleaning more often. We recommend that you visually inspect your filter once every 25,000 miles to determine if the screen is still visible. When the screen is no longer visible some place on the filter element, it is time to clean it. To clean and re-oil, purchase our filter Recharger® service kit, part number 99-5050 or 99-5000 and follow the easy instructions.