



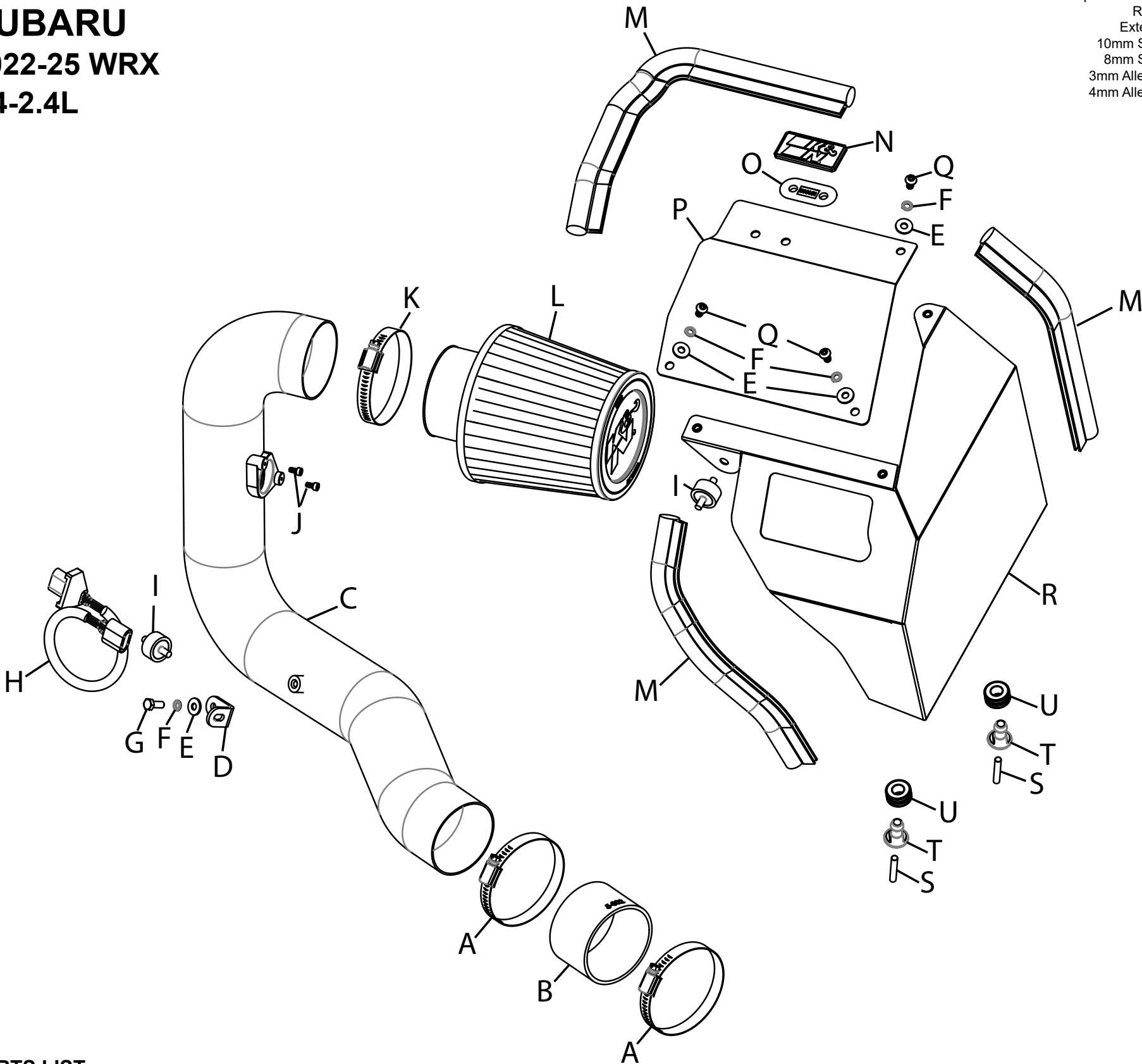
INSTALLATION INSTRUCTIONS

Not legal for sale or use in California on any pollution controlled motor vehicle.

69-8012TC
SUBARU
2022-25 WRX
H4-2.4L

TOOLS NEEDED:

- Phillips Screw Driver
- Ratchet
- Extension
- 10mm Socket
- 8mm Socket
- 3mm Allen Key
- 4mm Allen Key



PARTS LIST:

Description	Qty.	Part #	Description	Qty.	Part #	Description	Qty.	Part #
A HOSE CLAMP; #48	2	08601	H EXTENSION HARNESS; 13.5"L	1	21784	O PLATE; LOCKING, K&N BAGDGE	1	010151
B HOSE; 3"ID X 2"L SILICONE	1	5-302	I STUD; M6-1.00 RUBBER MNTD	2	07027	P LID	1	074570
C INTAKE TUBE; 3"OD X 32"L (AL)	1	25902C	J BOLT; M4-.7 X 8MM, ALNHD CAP	2	07733	Q BOLT; M6-1 X 12MM BTNHD	3	07794
D BRACKET; "L" SML.	1	070066A	K HOSE CLAMP; #52	1	08610	R HEAT SHIELD	1	074568
E WASHER; 6MM FLAT	4	08269	L AIR FILTER	1	RU-4990	S STUD; 6MM-1.00 X 35MM L	2	08220
F WASHER; M6, SPLIT LOCK	4	1-3025	M EDGE TRIM; (39"L)	1	102496	T MOUNT; PLASTIC AIRBOX	2	8-186-1
G BOLT; M6-1 X 16MM, HEX	1	07812	N BADGE; PLASTIC, SNAP-IN	1	088096	U GROMMET; 1"OD, 1/2"ID, 1/2"THK	2	08064

If you need any assistance please call 1-800-858-3333 to speak with a representative in our Customer Service Center before returning the product.

NOTE: FAILURE TO FOLLOW INSTALLATION INSTRUCTIONS AND NOT USING THE PROVIDED HARDWARE MAY DAMAGE THE INTAKE TUBE, THROTTLE BODY AND ENGINE.

TO START:

1. Turn off the ignition and disconnect the negative battery cable.
NOTE: Disconnecting the negative battery cable erases pre-programmed electronic memories. Write down all memory settings before disconnecting the negative battery cable. Some radios will require an anti-theft code to be entered after the battery is reconnected. The anti-theft code is typically supplied with your owner's manual. In the event your vehicles anti-theft code cannot be recovered, contact an authorized dealership to obtain your vehicles anti-theft code.



2. Remove the two push clips that secure the fresh air intake duct and then remove the intake duct from the vehicle.



3. Disconnect the mass air sensor electrical connection and unhook the wiring harness from the air filter assembly.



4. Loosen and remove the two bolts that secure the factory air filter housing to the inner fender.



5. Remove the nut the secures the vibration damper to the core support. This nut will be reused in a later step.



6. Loosen the hose clamp that secures the intake tube to the air filter housing and disconnect the hose. Release the two retaining clips and then remove the housing half and factory air filter.



7. Remove the remaining air filter housing half from the engine compartment.



8. Loosen the hose clamp that secures the intake tube to the turbo inlet and disconnect the tube from the turbo.



9. Remove the nut that secures the intake tube to the vibration damper. This nut will be reused in a later step.



10. Remove the entire stock intake tube.



11. Install the provided vibration damper onto the factory air filter housing mounting location using the factory nut.



12. Install the provided vibration damper onto the factory intake tube mounting location using the factory nut.



13. Remove the mass air sensor from the factory housing and install it into the K&N intake tube using the provided hardware.



14. Install the provided mounting bracket onto the intake tube as shown using the provided hardware.



15. Install the provided coupler onto the turbo inlet along with the provided hose clamps. Do not tighten the clamps.



16. Install the K&N intake tube into the coupler at the turbo and align the mounting bracket with the vibration damper. Connect the provided extension harness to the mass air sensor and then connect the other end to the factory harness.



17. Secure the mounting bracket to the vibration damper using the factory nut. Tighten the hose clamps at the turbo.



18. Install the K&N air filter onto the intake tube and secure with the provided hose clamp.



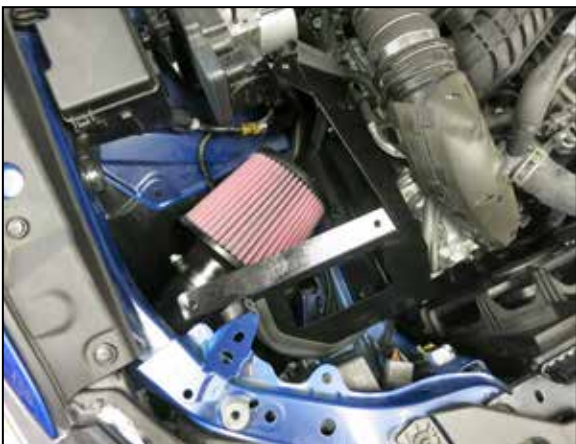
19. Install the provided m6 studs into the provided mounting posts.



20. Install the provided grommets into the base of the heat shield as shown.



21. Cut the provided edge trim into lengths of 11", 12" and 15". Install the 11" and 12" onto the heat shield as shown.



22. Install the mounting posts into the factory air filter housing mounting locations on the inner fender, then install the K&N heat shield onto the posts.



23. Secure the heat shield to the vibration damper using the factory nut.



24. Install the remaining 15" edge trim onto the lid as shown. Install the K&N badge and secure with the backing plate.



25. Install the lid onto the heat shield and secure with the provided hardware.



26. Reinstall the fresh air duct and secure with the factory mounting pins.



27. Reconnect the vehicle's negative battery cable. Double check to make sure everything is tight and properly positioned before starting the vehicle.

28. It will be necessary for all K&N® high flow intake systems to be checked periodically for realignment, clearance and tightening of all connections. Failure to follow the above instructions or proper maintenance may void warranty.

ROAD TESTING:

1. Start the engine with the transmission in neutral or park, and the parking brake engaged. Listen for air leaks or odd noises. For air leaks secure hoses and connections. For odd noises, find cause and repair before proceeding. This kit will function identically to the factory system except for being louder and much more responsive.

2. Test drive the vehicle. Listen for odd noises or rattles and fix as necessary.

3. If road test is fine, you can now enjoy the added power and performance from your kit.

4. K&N Engineering, Inc., requires cleaning the intake system's air filter element every 100,000 miles. When used in dusty or off-road environments, our filters will require cleaning more often. We recommend that you visually inspect your filter once every 25,000 miles to determine if the screen is still visible. When the screen is no longer visible some place on the filter element, it is time to clean it. To clean and re-oil, purchase our filter Recharger® service kit, part number 99-5050 or 99-5000 and follow the easy instructions.