



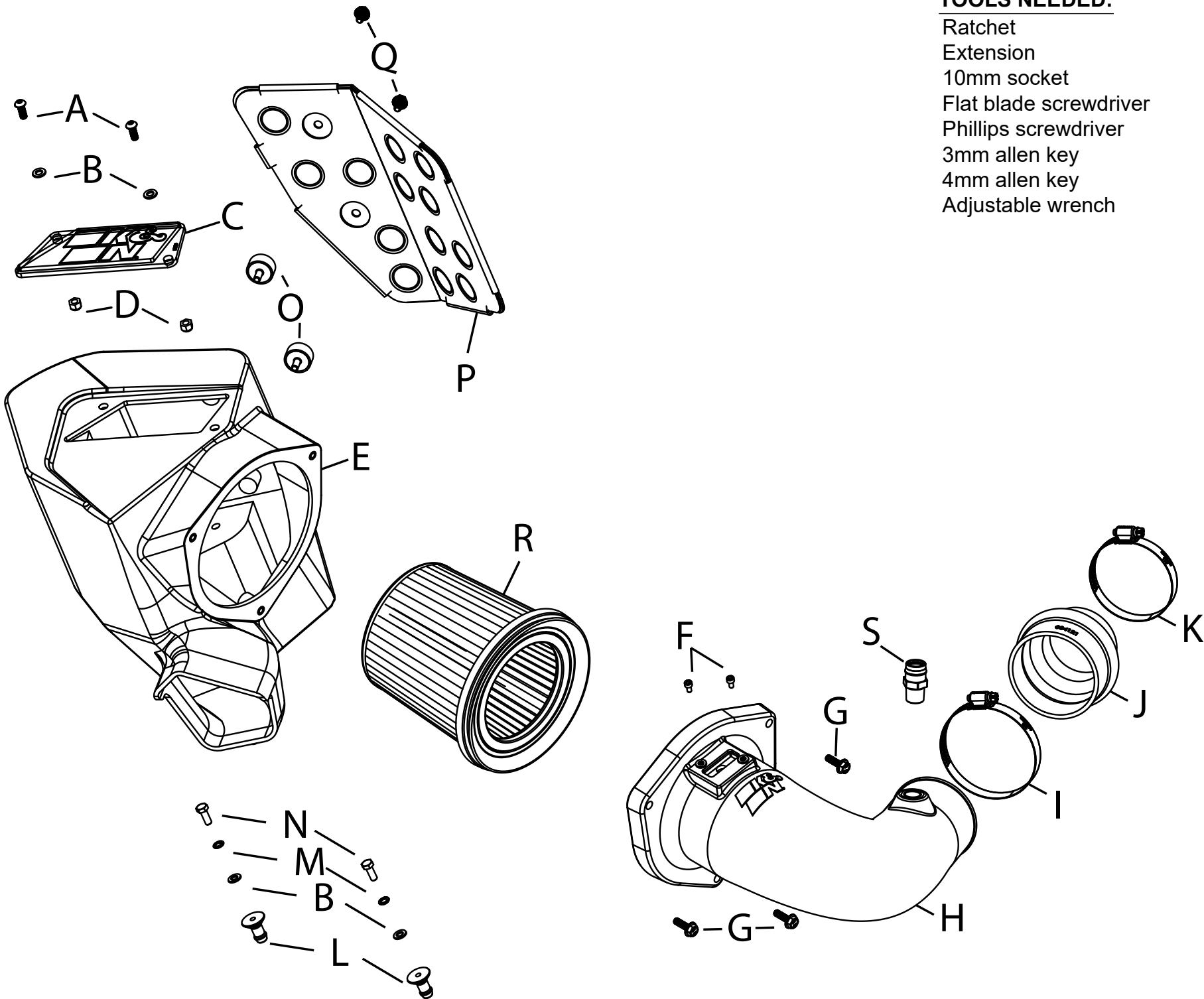
INSTALLATION INSTRUCTIONS

Not legal for sale or use in California on any pollution controlled motor vehicle.

63-9045 TOYOTA / BMW 2021-24 GR SUPRA 2020-24 Z4 L4-2.0L

TOOLS NEEDED:

- Ratchet
- Extension
- 10mm socket
- Flat blade screwdriver
- Phillips screwdriver
- 3mm allen key
- 4mm allen key
- Adjustable wrench



PARTS LIST:

Description	Qty.	Part #	Description	Qty.	Part #	Description	Qty.	Part #
A BOLT; M6 X 1 X 16MM, BTNHD	2	07730	H INTAKE TUBE; (PU)	1	087525-1	O STUD; RUBBER 1/2"L X 1"W	2	070228
B WASHER; 6MM FLAT	4	08269	I HOSE CLAMP; #52	1	08610	P HEAT SHIELD; ALUM	1	07380
C PLATE; K&N LOGO, CLEAR	1	08351-1	J HOSE; HUMP 2.5"ID X 3.25"ID	1	084121	Q BOLT; M6-1 X 12, HEX/FLANGE	2	1-2110
D NUT; 6MM NYLOCK, HEXHD	2	07553	K HOSE CLAMP; #44 STAINLESS	1	08560	R AIR FILTER	1	RU-5401
E AIRBOX; (NV)	1	087463A	L MOUNT; PLASTIC AIRBOX	2	8-186-1	S FITTING; 3/4"OD X 1.12"L	1	82934
F BOLT; M4-.7 X 8MM, ALNHD	2	07733	M WASHER; M6 SPLIT LOCK	2	1-3025			
G BOLT; M6-1 X 30, HEX/FLANGE	3	1-1016	N BOLT; M6-1 X 16MM, HEX	2	07812			

If you need any assistance please call 1-800-858-3333 to speak with a representative in our Customer Service Center before returning the product.

NOTE: FAILURE TO FOLLOW INSTALLATION INSTRUCTIONS AND NOT USING THE PROVIDED HARDWARE MAY DAMAGE THE INTAKE TUBE, THROTTLE BODY AND ENGINE.

TO START:

1. Turn off the ignition and disconnect the negative battery cable.
NOTE: Disconnecting the negative battery cable erases pre-programmed electronic memories. Write down all memory settings before disconnecting the negative battery cable. Some radios will require an anti-theft code to be entered after the battery is reconnected. The anti-theft code is typically supplied with your owner's manual. In the event your vehicles anti-theft code cannot be recovered, contact an authorized dealership to obtain your vehicles anti-theft code.



2. Disconnect the temperature sensor electrical connection. Loosen the hose clamp connecting the intake tube to the factory air filter housing, separate the tube from the housing. Lift the air filter housing up and remove it from the vehicle.



3. Pinch the locking tabs on the CCV hose connection and then disconnect the CCV hose from the factory intake tube.



4. Remove the clip that locks intake tube to the turbo inlet and then disconnect the tube from the turbo and remove it from the vehicle.



5. Install the provided mounting studs onto the K&N air filter housing using the provided hardware.



6. Install the K&N window into the air filter housing using the provided hardware.



7. Install the two rubber mounts onto the K&N air filter housing using the provided hardware.



8. Install the heat shield onto the rubber mounted studs using the provided hardware.



9. Install the provided CCV fitting into the K&N intake tube. Be sure to apply thread sealer before installing the fitting into the intake tube.



10. Remove the temp sensor from the factory intake tube. Install the sensor into the intake tube using the provided hardware.



11. Place the air filter into the K&N air filter housing.



12. Install the K&N tube onto the filter housing and secure with the provided hardware.



13. Install the provided coupler onto the turbo inlet.



14. Install the assembly into the vehicle so the intake tube engages into the coupler and the mounting studs engage into the mounting grommets. Tighten hose clamp.



15. Connect the CCV hose to the fitting installed into the intake tube.



16. Reconnect the temp sensor electrical connection.



17. Reconnect the vehicle's negative battery cable. Double check to make sure everything is tight and properly positioned before starting the vehicle.

18. It will be necessary for all K&N® high flow intake systems to be checked periodically for realignment, clearance and tightening of all connections. Failure to follow the above instructions or proper maintenance may void warranty.

ROAD TESTING:

1. Start the engine with the transmission in neutral or park, and the parking brake engaged. Listen for air leaks or odd noises. For air leaks secure hoses and connections. For odd noises, find cause and repair before proceeding. This kit will function identically to the factory system except for being louder and much more responsive.
2. Test drive the vehicle. Listen for odd noises or rattles and fix as necessary.
3. If road test is fine, you can now enjoy the added power and performance from your kit.
4. K&N Engineering, Inc., requires cleaning the intake system's air filter element every 100,000 miles. When used in dusty or off-road environments, our filters will require cleaning more often. We recommend that you visually inspect your filter once every 25,000 miles to determine if the screen is still visible. When the screen is no longer visible some place on the filter element, it is time to clean it. To clean and re-oil, purchase our filter Recharger® service kit, part number 99-5050 or 99-5000 and follow the easy instructions.