



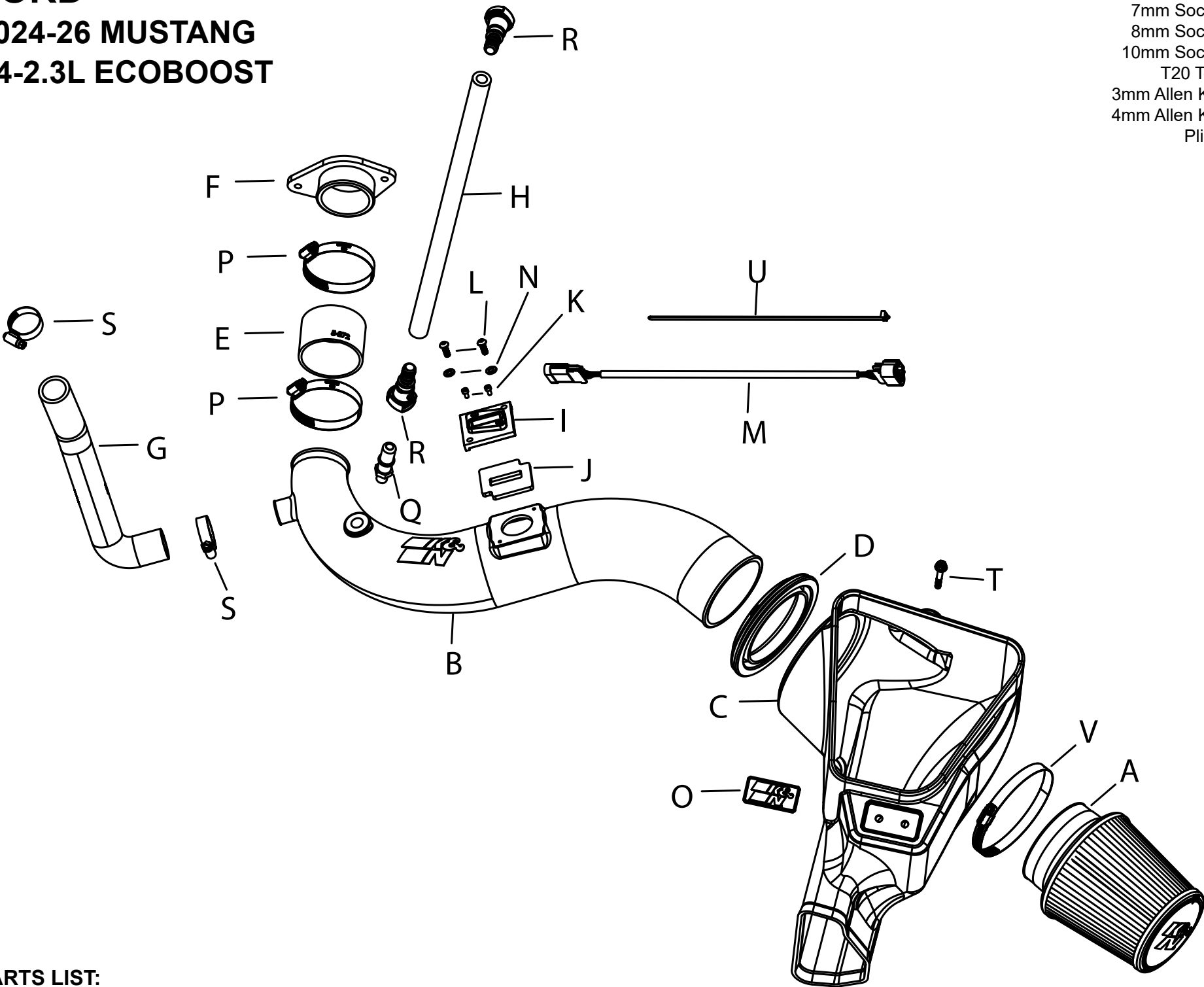
INSTALLATION INSTRUCTIONS

Not legal for sale or use in California on any pollution controlled motor vehicle.

63-2627 FORD 2024-26 MUSTANG L4-2.3L ECOBOOST

TOOLS NEEDED:

- Ratchet
- Extension
- 7mm Socket
- 8mm Socket
- 10mm Socket
- T20 Torx
- 3mm Allen Key
- 4mm Allen Key
- Pliers



PARTS LIST:

Description	Qty.	Part #	Description	Qty.	Part #	Description	Qty.	Part #
A AIR FILTER	1	RE-0850	I ADAPTOR; MAF SENSOR	1	088032	P HOSE CLAMP #44	2	08577
B TUBE	1	087602	J GASKET; PORON	1	09069	Q VENT; 1/4" NPT QUICKCONN	1	082628
C AIRBOX	1	087603	K BOLT; M4 X 8MM	2	07733	R FITTING; QUICK CONNECT	2	08526
D SEAL; AIRBOX TO TUBE	1	21573	L BOLT; M6X1X 16MM	2	07730	S HOSE CLAMP #16	2	08413
E HOSE; 2.75"X2"	1	5-272	M HARNESS; EXTENSION	1	21787	T BOLT; HEX M6X40MM	1	1-2075
F FLANGE; TURBO ALUM	1	088122	N WASHER; FLAT SS	2	08269	U CABLE TIE	1	21590
G HOSE; 1.125ID X 15" L	1	084199	O BADGE; K&N SNAP IN	1	088096	V HOSE CLAMP #64	1	08648
H HOSE; 5/8"ID X 19"L	1	08611						

If you need any assistance please call 1-800-858-3333 to speak with a representative in our Customer Service Center before returning the product.

NOTE: FAILURE TO FOLLOW INSTALLATION INSTRUCTIONS AND NOT USING THE PROVIDED HARDWARE MAY DAMAGE THE INTAKE TUBE, THROTTLE BODY AND ENGINE.

TO START:

1. Turn off the ignition and disconnect the negative battery cable.
NOTE: Disconnecting the negative battery cable erases pre-programmed electronic memories. Write down all memory settings before disconnecting the negative battery cable. Some radios will require an anti-theft code to be entered after the battery is reconnected. The anti-theft code is typically supplied with your owner's manual. In the event your vehicles anti-theft code cannot be recovered, contact an authorized dealership to obtain your vehicles anti-theft code.



2. Disconnect the MAF sensor electrical connection and then loosen the hose clamp that secures the factory intake tube to the air filter housing.



3. Loosen the hose clamp that secures the fresh air duct to the air filter housing.



4. Remove the two mounting nuts, disconnect the intake & fresh air hoses and remove the factory air filter housing. Remove the fresh air scoop.
NOTE: K&N Engineering, Inc., recommends that customers do not discard factory air intake.



5. Disconnect the BOV hose and the CCV hose from the factory intake tube.



6. Remove the two nuts that secures the turbo inlet onto the turbo.



7. Remove the intake tube from the vehicle.



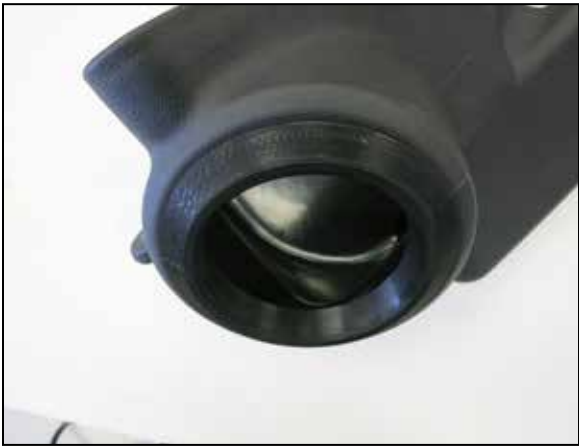
8. Remove the factory CCV hose from the vehicle.



9. Remove the MAF sensor from the factory air filter housing and then install it into the K&N intake tube using the provided Adapter, Gasket & hardware as shown.
NOTE: Be sure to install the sensor in the correct direction, the opening should be towards the large end of the tube.



10. Install the provided CCV quick connect fitting into the K&N intake tube as shown.
NOTE: NPT fittings are easy to cross thread. Install the vent fitting "hand" tight, then turn it two complete turns with a wrench.



11. Install the provided tube seal into the K&N air filter housing as shown.



12. Install the K&N badge into the K&N air filter housing as shown.



13. Remove the sealing O-ring from the factory turbo flange and install it into the K&N turbo flange.



14. Install the provided coupler onto the turbo flange as shown.



15. Install the turbo flange assembly onto the turbo and secure with the factory hardware.



16. Remove the coolant bottle mounting bolt shown.



17. Install the K&N air filter housing into the vehicle and secure with the factory bolt from the previous step.



18. Install the K&N air filter into the K&N air filter housing.



19. Install the intake tube through the seal in the air filter housing and then into the coupler at the turbo. Adjust the tube for best fit and then secure with the provided hose clamps.



20. Install the provided CCV quick connect fittings into the provided CCV hose.



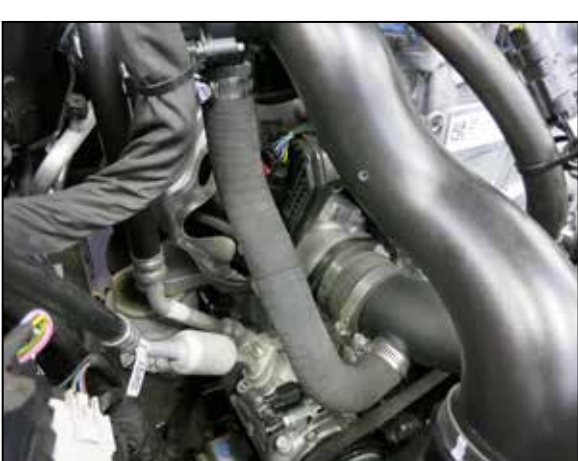
21. Install the CCV hose assembly onto the fittings on the valve cover and intake tube.



22. Install the provided MAF harness extender and secure with the provided tie wrap.



23. Install the air filter onto the intake tube and secure with the provided hose clamp.



24. Install the provided BOV hose onto the intake tube and BOV, secure with the provided hose clamps.



25. Reconnect the vehicle's negative battery cable. Double check to make sure everything is tight and properly positioned before starting the vehicle.

26. It will be necessary for all K&N® high flow intake systems to be checked periodically for realignment, clearance and tightening of all connections. Failure to follow the above instructions or proper maintenance may void warranty.

ROAD TESTING:

1. Start the engine with the transmission in neutral or park, and the parking brake engaged. Listen for air leaks or odd noises. For air leaks secure hoses and connections. For odd noises, find cause and repair before proceeding. This kit will function identically to the factory system except for being louder and much more responsive.

2. Test drive the vehicle. Listen for odd noises or rattles and fix as necessary.

3. If road test is fine, you can now enjoy the added power and performance from your kit.

4. K&N Engineering, Inc., requires cleaning the intake system's air filter element every 100,000 miles. When used in dusty or off-road environments, our filters will require cleaning more often. We recommend that you visually inspect your filter once every 25,000 miles to determine if the screen is still visible. When the screen is no longer visible some place on the filter element, it is time to clean it. To clean and re-oil, purchase our filter Recharger® service kit, part number 99-5050 or 99-5000 and follow the easy instructions.