



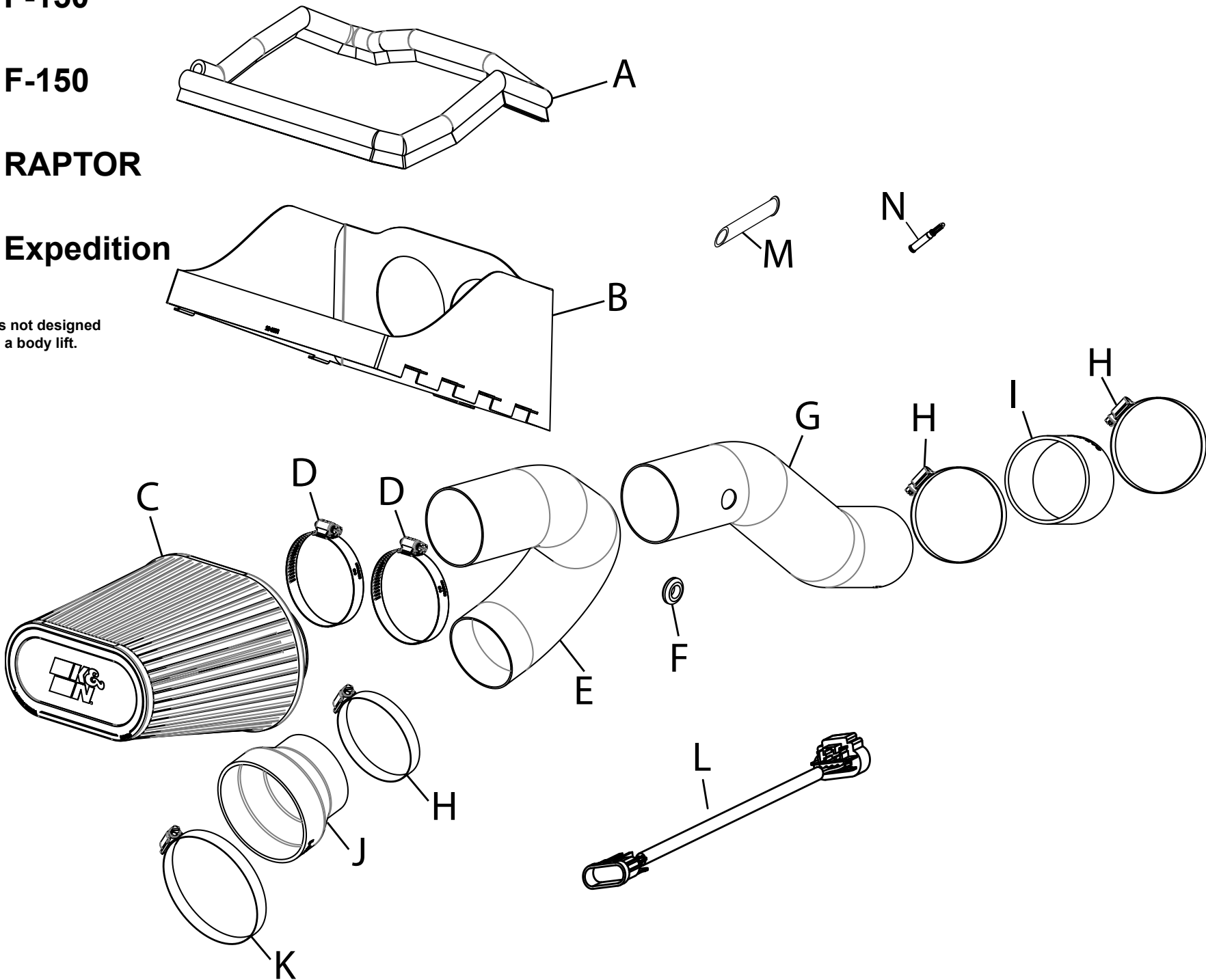
# INSTALLATION INSTRUCTIONS

Not legal for sale or use in California on any pollution controlled motor vehicle.

30-2617KC  
FORD  
2015-26 F-150  
V6-2.7L  
2015-25 F-150  
V6-3.5L  
2017-25 RAPTOR  
V6-3.5L  
2021-25 Expedition  
V6-3.5L

NOTE: This kit was not designed to fit vehicles with a body lift.

TOOLS NEEDED:  
Flat Blade Screw Driver  
Side Cutters



### PARTS LIST:

Description	Qty.	Part #	Description	Qty.	Part #	Description	Qty.	Part #
A EDGE TRIM; (42"L)	1	102499	E INTAKE TUBE; 3"OD X 20"L (AL)	1	25898C	I HOSE; 3" X 3" BLK SILICONE	1	5-300
B HEAT SHIELD	1	20-8551	F GROMMET; 1/2"ID, 3/32"GW, 3/4"HD	1	784646	J HOSE; ADAPTOR, 4/3 X 3" BLK	1	5-430
C AIR FILTER	1	RU-3136HBK	G INTAKE TUBE; 3"OD X 20"L (AL)	1	25897C	K CLAMP; 1/2" BNDHOSE; 3.56"-4.50"	1	9464
D HOSE CLAMP; #48 BLK ZINC	2	08601KA	H CLAMP; 1/2" BNDHOSE, 2.56"-3.50"	3	9448	L EXTENSION HARNESS; 11"L	1	21783
						M INSERT; PCV	1	7-284
						N SUPER GLUE	1	409

If you need any assistance please call 1-800-858-3333 to speak with a representative in our Customer Service Center before returning the product.

NOTE: FAILURE TO FOLLOW INSTALLATION INSTRUCTIONS AND NOT USING THE PROVIDED HARDWARE MAY DAMAGE THE INTAKE TUBE, THROTTLE BODY AND ENGINE.

### TO START:

1. Turn off the ignition and disconnect the negative battery cable.  
**NOTE: Disconnecting the negative battery cable erases pre-programmed electronic memories. Write down all memory settings before disconnecting the negative battery cable. Some radios will require an anti-theft code to be entered after the battery is reconnected. The anti-theft code is typically supplied with your owner's manual. In the event your vehicles anti-theft code cannot be recovered, contact an authorized dealership to obtain your vehicles anti-theft code.**



2. Disconnect the IAT sensor electrical connection.



3. Loosen the three hose clamps that secure the factory intake tube and then remove the intake tube from the vehicle.





4. Release the clips that secure the factory air filter upper housing and remove the housing and factory air filter from the vehicle. **NOTE: K&N Engineering, Inc., recommends that customers do not discard factory air intake.**



5. Install the provided edge trim onto the K&N heat shield as shown. Some trimming of the edge trim will be necessary.



6. Install the K&N air filter into the heat shield.



7. Place the heat shield assembly onto the factory lower air filter housing so that the tabs seat into the housing. Secure the heat shield with the factory retaining clips.



8. Remove the AIT sensor from the factory intake tube. Remove the O-ring from the sensor and then install it into the K&N intake tube with the provided grommet. **NOTE: The IAT sensor is fragile, use caution while handling the sensor to prevent damage.**



9. Install the provided straight coupler onto the passenger side turbo inlet tube and secure with the provided hose clamp.



10. Install the provided step coupler onto the driver side turbo inlet tube and secure with the provided hose clamp.



11. Install the rear K&N intake tube into the air filter and passenger side turbo inlet tube, adjust for best fit and then secure with the provided hose clamps.



12. Connect the IAT electrical connection. **NOTE: It maybe necessary to use the included extension harness to connect the IAT sensor.**



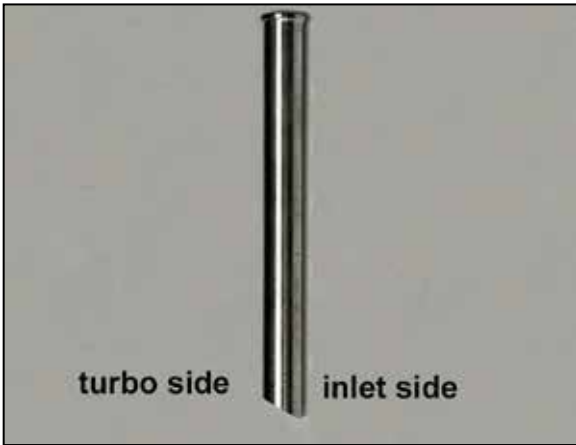
13. Install the front K&N intake tube into the filter and then into the driver side turbo inlet tube, adjust for best fit and secure with the provided hose clamps.



14. Install the K&N decal onto the front intake tube.



15. On 2021 model year and earlier 3.5L Ecoboost vehicles, Disconnect the CCV connection shown on the driver side turbo inlet tube. On 2022 and later model vehicles, skip to step #.



16. On 2021 and earlier 3.5L Ecoboost vehicles, insert the provided CCV insert into the fitting on the turbo inlet tube. **NOTE: The Angled end of the cut needs to be installed with the shorter end towards the turbo and the longer end towards the inlet.** Apply two drops of the provided super glue under the lip of the insert before installation.





17. Reconnect the CCV hose connection.



18. Reconnect the vehicle's negative battery cable. Double check to make sure everything is tight and properly positioned before starting the vehicle.

19. It will be necessary for all K&N® high flow intake systems to be checked periodically for realignment, clearance and tightening of all connections. Failure to follow the above instructions or proper maintenance may void warranty.

**ROAD TESTING:**

1. Start the engine with the transmission in neutral or park, and the parking brake engaged. Listen for air leaks or odd noises. For air leaks secure hoses and connections. For odd noises, find cause and repair before proceeding. This kit will function identically to the factory system except for being louder and much more responsive.
2. Test drive the vehicle. Listen for odd noises or rattles and fix as necessary.
3. If road test is fine, you can now enjoy the added power and performance from your kit.
4. K&N Engineering, Inc., requires cleaning the intake system's air filter element every 50,000 miles. When used in dusty or off-road environments, our filters will require cleaning more often. We recommend that you visually inspect your filter once every 25,000 miles to determine if the screen is still visible. When the screen is no longer visible some place on the filter element, it is time to clean it. To clean, purchase our Synthetic Filter Cleaner, part number 99-0624 and follow the easy instructions.